

Alabama FFA Foundation

Annual Report

2017-2018

OVERVIEW

Agriscience education in Alabama is designed as a 3-part model: Classroom and Laboratory Instruction, FFA and SAE (Supervised Agriculture Experience).

CLASSROOM

Class and lab instruction are the foundation of ag education and a successful FFA Chapter. The ag ed mission is to prepare students for successful careers & informed choices in global agriculture, food, fiber and natural resources systems.

FFA

FFA is among the largest youth organizations in the US. Advisors supervise chapter members as they conduct service projects, leadership development workshops or career development activities. In Alabama, chapters are divided into 3 districts. District Eliminations are held annually to determine which teams will compete in state contests called CDEs.

SAE

A student's SAE project is an extension of the classroom experience. The student has an opportunity to learn through hands-on applications outside of the regularly scheduled class time.

MISSION STATEMENT

FFA makes a positive difference in the lives of students by developing their potential for premier leadership, personal growth and career success through agricultural education.



2017-2018 State FFA Officer team members are (from Top Left) VPresident John Crawford, A.P. Brewer; Reporter Will Jordan, Clay Central; Sentinel Bryce Hendricks, Enterprise; Secretary Gracen Sims, Marbury; President Cameron Catrett, Brantley; Treasurer Jasey Black, Clements.

STUDENT LEADERSHIP

Alabama FFA selects its best to represent the organization each year. Six state officers are elected to serve the organization at the annual state convention. The state officers serve on the Executive Committee of the Alabama FFA Association and conduct the business of the organization. They also visit chapters and inspire chapters to be in a perpetual state of improvement. Additionally, the districts select officer teams each year through an application and interview process. These officers also conduct chapter visits, give speeches and conduct workshops for chapters.

Thank you Sponsors and Donors!

Platinum (\$15,000 +)



Gold (\$10,000-\$14,999)



Silver (\$5,000-\$9,999)



Bronze Sponsors (\$2,500 — \$4,999)

Alabama Association of Conservation Districts
Auburn University Colleges of Agriculture and Education
Cargill
Heavy-Penny-A-Hen Committee

Home Builders Association of Alabama
William J. Redmond & Son, Inc.

Five Star Partners (\$1,000 — \$2,499)

Alabama Beef Checkoff	Bonnie Plants, Inc.
Alabama Cattlemen's Association	First South Farm Credit
Alabama Sheriffs Association	Florida Fruit Association, Inc.
Alabama Forestry Foundation	Jerry Newby
Alabama Nursery & Landscape Association	Mule Ware, LLC
Alabama Soil & Water Conservation Committee	Robin Parnell

Sarah Murchison
Southeastern Livestock Exposition
Ward Farms

Four Star Partners (\$500 — \$999)

Alabama Council of Cooperatives	Alabama Wildlife Federation
Alabama Agribusiness Council	ALFA - Catfish Division
Alabama Poultry and Egg Association	Doug Rigney
Alabama Treasure Forest Association	Dr. and Mrs. John P. Summerford
Alabama Turfgrass Association	Florida Farm Bureau
Alabama Wheat and Feed Grain Producers	Jim Cravey

Jimmy Parnell
Mrs. Sarah Murchison
PowerSouth
River Brite Citrus
Thompson Tractor Company
Twilley Lands

Three Star Partners (\$250 — \$499)

Baldwin County Farmers Federation	Maples Farm
Brad Williams	Milton Wendland
Chris Randolph	Roberts Poultry
Colbert County Farmers Federation	Silas Timber Co. LLC

Southern Heritage of Mississippi, Inc.
Sumter County Farmers Federation
Thomas Hall

Two Star Partners (\$100 — \$249)

Autauga County Farmers Federation	Dennis Acker
Billy Powell	Don Mulvaney
Blount County Farmers Federation	Etowah County Farmers Federation
Boyd Farm	Geneva County Farmers Federation
Bullock County Farmers Federation	Grace Ellis
Carmon Smith	Hodge Farms
Cherokee County Farmers Federation	Houston County Farmers Federation
Chilton County Farmers Federation	Hunter Price
Clay County Farmers Federation	Jackson Co. Farmers Federation
Cleburne County Farmers Federation	James Linder
Conecuh County Farmers Federation	Jeff Helms
Crenshaw County Farmers Federation	Jeff Lassiter
Cullman County Farmers Federation	Jefferson County Farmers Federation
Dale County Farmers Federation	Justin and Elizabeth Newby Crow
Dan Presley	Kenneth Northey
Davis Henry	Lavord Crook

Laymon Phillips
Lee Co. Farmers Federation
M. Wayne Davis
Macon County Farmers Federation
Marengo County Farmers Federation
Micky Smith
Mike Dee
Mike Jones
Mobile County Farmers Federation
Monroe County Farmers Federation
Morgan County Farmers Federation
Paul Pinyan
Perry County Farmers Federation
Pike County Farmers Federation
Reed Rogers
Rickey Cornutt

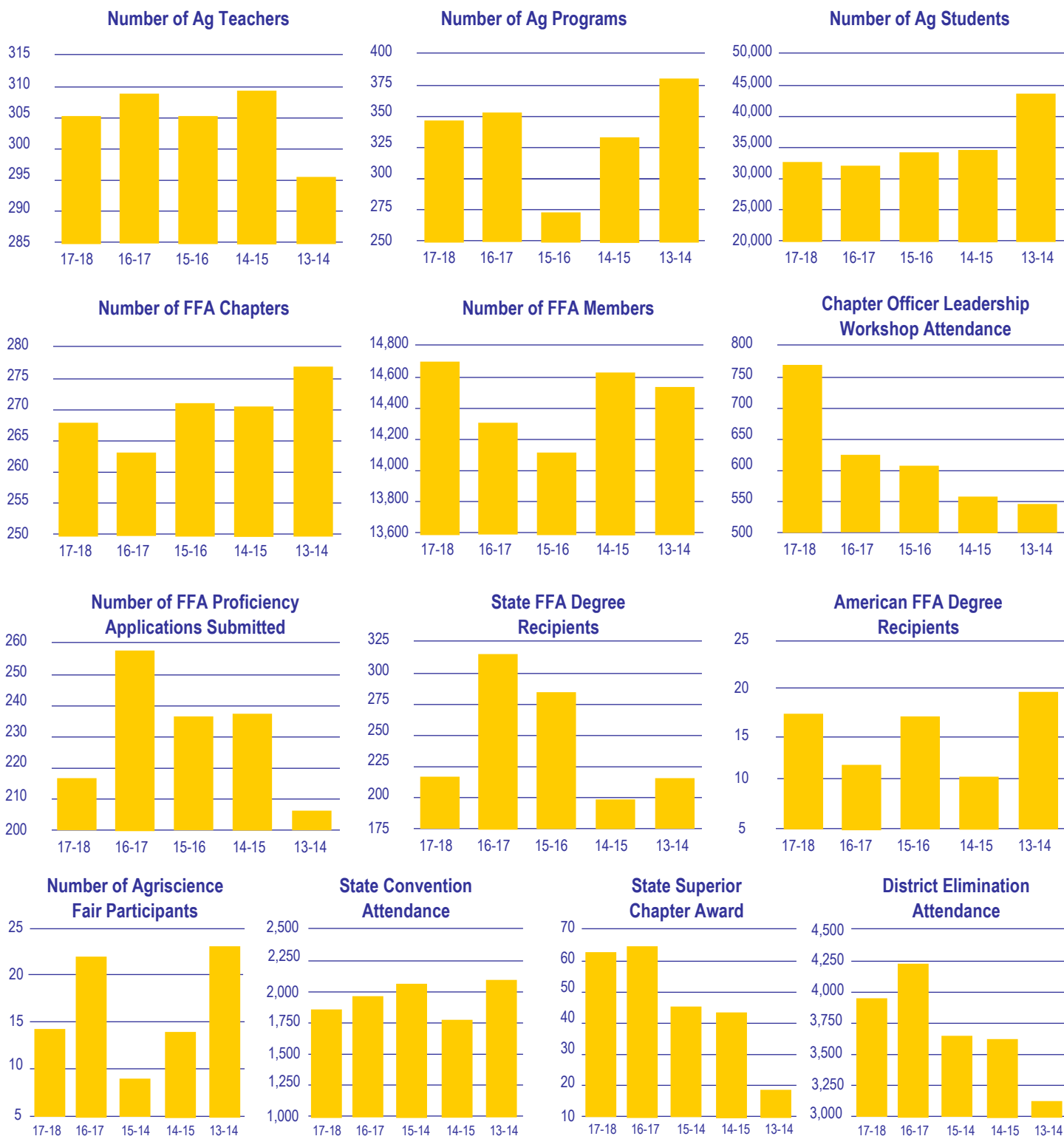
Rivers Myres
Robert Byrd, Jr.
Russell County Farmers Federation
S & L Farms
Sam Givhan
St. Clair County Farmers Federation
Talladega County Farmers Federation
Ted Grantland
The Honorable Tom Whatley
Tommy Martin
Tuscaloosa County Farmers Federation
W.J. Lee III
Walker County Farmers Federation

One Star Partners (\$99 or less)

Edwin Mitchell

Shawn Lambert

Agriscience Education and FFA By The Numbers



*Bottom axis indicates academic year.

Did You Know?

You can donate to Alabama FFA online! Visit alabamaffa.org and click on the "Partners" tab on the left-hand menu. We appreciate the support!

"I believe in the future of agriculture..."

Chapter Spotlight

Enterprise FFA students have had an exceptional year in their effort toward achieving Premier Leadership, Personal Growth and Career Success. Advisors Jared and Whitney Dyess have worked diligently with these dedicated students and have accomplished some outstanding goals. For 2017-2018, those achievements include:

- Earning a 3-star National Chapter Award
- Being selected as finalist in two areas of the National Premier Chapter Program – "Growing Leaders" and "Strengthening Agriculture"
- Achieving 100% chapter membership
- Winning multiple state CDE and LDE contests

- Earning National gold ranking in Parliamentary Procedure
- Successfully engaging with local alumni chapter, Farm-City committee, Chamber of Commerce and other agricultural industries.
- Having a District (Kendra Peebles), State (Summer Parker-President) and National (Jordan Stowe) FFA Officer for 2018-2019.

Advisor Whitney Dyess recognizes the success of her members is driven in great part by the support of sponsors and donors. "Without support of Alabama FFA donors, these accomplishments of our students would never be possible," Dyess said. "It truly takes a village to raise a child, and it is imperative in our 'Agriculture village' that students have opportunities to learn and practice vital skills that will be needed for success and continued growth of our

industry. Thank you, donors, for everything you do for members and the future of agriculture!"



Enterprise FFA Members pose with 23 state-winning banners at 2018 Alabama FFA State Convention.



More than 800 Alabama FFA members attended the 90th National FFA Convention in Indianapolis, Ind.

*FFA Motto:
Learning to Do
Doing to Learn
Earning to Live
Living to Serve*

Agriscience Education is one unit in the Career and Technical Education Section of the Alabama Department of Education.

Dr. Eric G. Mackey

State Superintendent of Education

Mr. Tommy Glasscock

Assistant State Superintendent of Career and Technical Education and Workforce Development

Agriscience Education - Montgomery Office

Education Administrator/State FFA Advisor—Jacob Davis

Education Specialist—Michael Hutto

Administrative Assistant—Tolina Davis

The Alabama State Board of Education and the Alabama State Department of Education do not discriminate on the basis of race, color, disability, sex, religion, national origin, or age in their programs, activities, or employment and provide equal access to the Boy Scouts and other designated youth groups. The following person is responsible for handling inquiries regarding the non-discrimination policies: Title IX Coordinator, Alabama State Department of Education, P.O. Box 302101, Montgomery, AL 36130-2101, telephone (334) 242-8165.



Agriscience Education- Auburn Field Office

FFA Executive Secretary—Andy Chamness

Graphic Arts Technician—Kenny Boyd

Alabama FFA Foundation 2017-2018 Board Members

Paul Pinyan (President) - AL Farmers Federation

Jim Cravey (Vice President) - Past State FFA Officer

Doug Thiessen (Secretary/Treasurer) - Alabama Ag Credit

Andrew Brock - AAAE Past President (Marshall Tech. School)

Andy Chamness - Alabama FFA Executive Secretary

Brad Williams - Wayne Farms

Caleb Goodwyn - PowerSouth Energy Cooperative

Cameron Catrett - President-AL FFA Association

Chris Alexander - Cargill

Chris Isaacson - AL Forestry Association

Daryl Behel - AAAE President (Cherokee HS)

Doug Rigney - Board Member Emeritus

Dr. Billy Powell - Alabama Cattlemen's Association –retired

H. N. Lewis - Board Member Emeritus

Jacob Davis - State FFA Advisor

Jason Davis - Alabama Power

Jerry A. Newby - Newby Farms

Jim Allen - Alabama Farmers Cooperative

Josh Johnson - WSFA Channel 12 Montgomery

Keith McCurdy - First South Farm Credit

Matt Ball - AAAE President Elect (Florence HS)

Mike Underwood - TriGreen Equipment

Reed Rogers - Golden Peanut Company

Sarah P. Murchison - AL Team AgEd



Alabama FFA Association

**P. O. Box 302101
Montgomery, AL 36130-2101**

**Phone: 334-242-9114
Fax: 334-242-0234**

Visit us online at www.alabamaffa.org, www.ffa.org!