

Alabama FFA Foundation Annual Report

2018-2019

OVERVIEW

Agriscience Education in Alabama is designed as a three-part model: Classroom and Laboratory Instruction, FFA and SAE (Supervised Agriculture Experience).

CLASSROOM

Class and lab instruction are the foundation of ag education and a successful FFA Chapter. The aged mission is to prepare students for successful careers & informed choices in global agriculture, food, fiber and natural resources systems.

FFA

FFA is among the largest youth organizations in the US. Advisors supervise chapter members as they conduct service projects, leadership development workshops and career development activities. In Alabama, chapters are divided into three districts. District Eliminations are held annually to determine which teams will compete in state contests called CDEs.

SAE

A student's SAE project is an extension of the classroom experience. The student has an opportunity to learn through hands-on applications outside of the regularly scheduled class time.

MISSION STATEMENT

FFA makes a positive difference in the lives of students by developing their potential for premiere leadership, personal growth and career success through agricultural education.

STUDENT LEADERSHIP

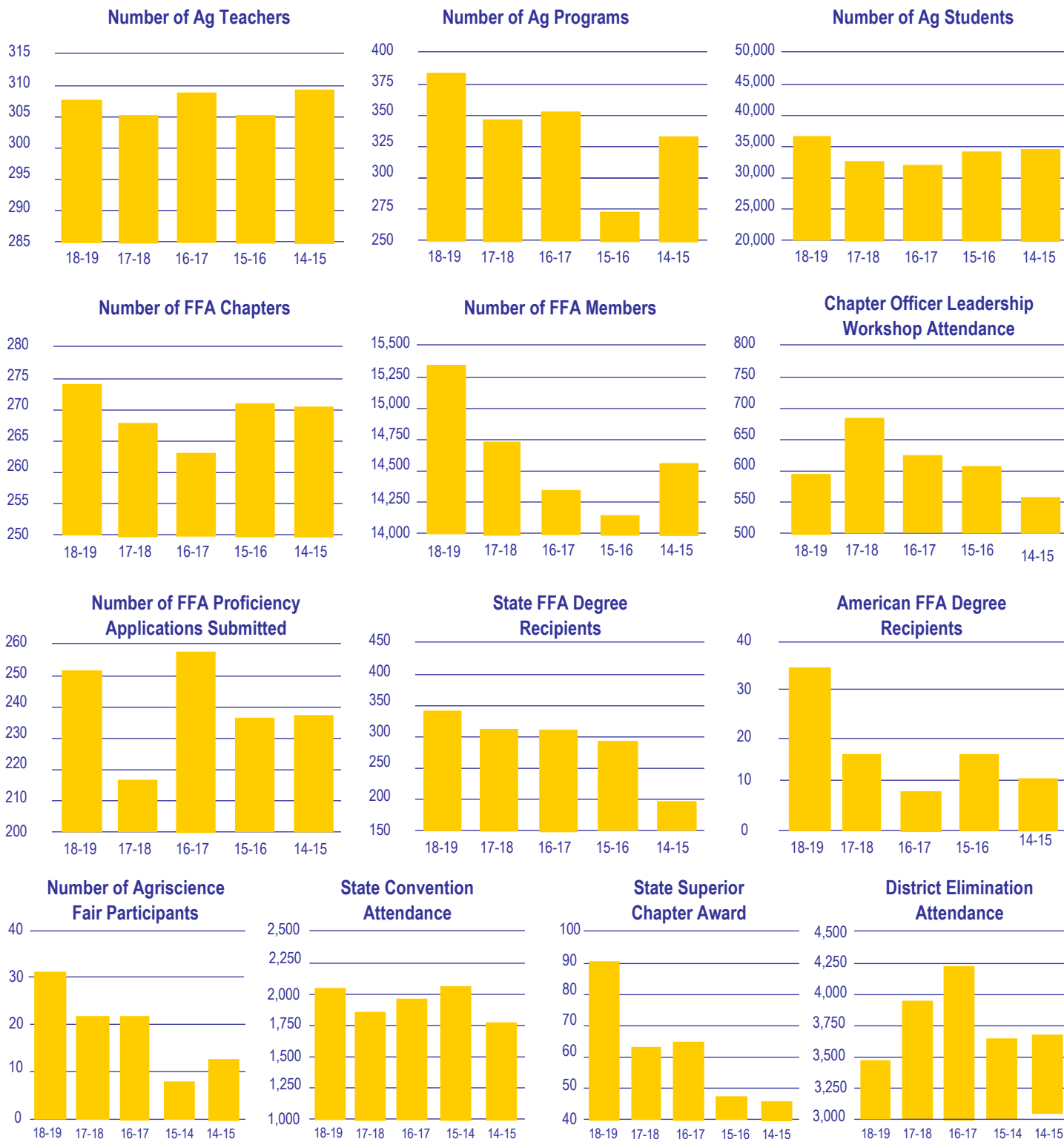


2018-2019 State FFA Officer team members are (from left), Treasurer, Ethan Phillips; Sentinel, Kalyn Rouse; Reporter, Preston Hughes; President, Summer Parker; Secretary, Matthew Wilson; and Vice President, Maggie Edwards.

Alabama FFA selects its best to represent the organization each year. Six state officers are elected to serve the organization at the annual state convention. The state officers serve on the Executive Committee of the Alabama FFA Association and conduct the business of the organization. They also visit chapters and inspire chapters to be in a perpetual state of improvement.

Additionally, the districts select officer teams each year through an application and interview process. These officers also conduct chapter visits, give speeches and conduct workshops for chapters.

Agriscience Education and FFA By The Numbers



*Bottom axis indicates academic year.

Did You Know?

You can donate to Alabama FFA online! Visit alabamaffa.org and click on the "Sponsors" under the "Partner With Us" tab.

"I believe in the future of agriculture..."

Thank you Sponsors and Donors!



Bronze Sponsors (\$2,500 — \$4,999)

Alabama Association of Conservation Districts

Cargill

Heavy Penny A Hen

Home Builders Association of Alabama

PowerSouth Energy Cooperative

William J. Redmond & Son, Inc.

Five Star Partners (\$1,000 — \$2,499)

Alabama Beef Checkoff

AL Nursery and Landscape Association

AL Soil and Water Conservation Committee

Alabama Cattlemen

Alabama Farmers Federation - Dairy Division

Alabama Forestry Foundation

Alabama Rural Electric Association

Alabama Sheriffs Association

Auburn University College of Agriculture

Auburn University College of Education

Doug and Jenny Thiessen

First South Farm Credit

Florida Fruit Association, Inc.

Jerry Newby

Jim Cravey

Jimmy Parnell

National FFA / Tractor Supply

Sarah Murchison

Southeast United Dairy Industry Association

Southeastern Livestock Exposition

Ward Farms

Four Star Partners (\$500 — \$999)

Alabama Council of Cooperatives

Alabama Agribusiness Council

Alabama Farmers Federation - Catfish Division

Alabama Farmers Federation - Forestry Division

AL Farmers Federation - Meat Goat & Sheep Division

Alabama Farmers Federation - Pork Division

Alabama Peanut Producers

Alabama Poultry and Egg Association

Alabama Treasure Forest Association

Alabama Turfgrass Association

Alabama Wildlife Federation

Douglas Rigney

Dr. and Mrs. John P. Summerford

Elmore County Farmers Federation

Greenway Plants, Inc.

Mrs. Sarah Murchison

Robert and Samantha Ramey

Thompson Tractor Company

Twilley Lands

Three Star Partners (\$250 — \$499)

AL Farmers Federation - Young Farmers Division

Dick Winsett

Maples Farm

Two Star Partners (\$100 — \$249)

Autauga County Farmers Federation

Barbour County Farmers Federation

Bhate Geosciences

Bibb County Farmers Federation

Billy Powell

Bullock County Farmers Federation

Butler County Farmers Federation

Calhoun County Farmers Federation

Chilton County Farmers Federation

Coffee County Farmers Federation

Colbert County Farmers Federation

Conecuh County Farmers Federation

Coosa County Farmers Federation

Cullman County Farmers Federation

Dale County Farmers Federation

Deborah Edwards

Dekalb County Farmers Federation

Dick and Patricia Cobb

Donna Douglas

Elizabeth Newby Crow

Etowah County Farmers Federation

Fayette County Farmers Federation

Frank Moorer

Geneva County Farmers Federation

Henry County Farmers Federation

Houston County Farmers Federation

Jackson County Farmers Federation

Jeff and Laurie Helms

Jefferson County Farmers Federation

Kenneth Northey

Kimberly Barnett

Kimberly Pridgen

Lee County Farmers Federation

Lee Farm

Luke Knight

Marengo County Farmers Federation

Marion County Farmers Federation

Matt Wilson

Micky Smith

Mike Jones

Mobile County Farmers Federation

Morgan County Farmers Federation

Patricia Copeland

Paul Pinyan

Perry County Farmers Federation

Pickens County Farmers Federation

Pryor Murphree

Reed Rogers

Rivers Myres

Roberts Poultry, Inc.

Roger Page

Russell County Farmers Federation

Shelly Baker

Steris IMS

Sumter County Farmers Federation

Taber and Grace Ellis

Takela Underwood

Talladega County Farmers Federation

Tallapoosa County Farmers Federation

Ted Grantland

Theresa Moore

Tom Whatley

Tuscaloosa County Farmers Federation

Walker County Farmers Federation

Washington County Farmers Federation

Winston County Farmers Federation

One Star Partners (\$99 or less)

Davis and Margery Henry

Eric and Hope Cadwell

John Ward

Larry Justice

Mike Casey

NorthPark Baptist Church

Open Hands Sunday School

Sarah Deen

Scott and Everlie Bolton

Shelby Smith

Thomas and Cassandra Ramey

Toni Deason

Valerie Burden

Wayne and Susan Ward

Alabama FFA Foundation Recognizes Outstanding Individuals

Several distinguished men and women were honored by the Alabama FFA Foundation in 2018-2019 for hard work and outstanding achievement. Those award areas and individuals are listed below.

Advisors of the Year



South, Jena Owens, South Choctaw North, Ben Maples, Elkmont Central, Amy Stephens, Lincoln

Wall of Honor Inductees



From Left: Shep Morris, Jack Harris, Sarah Murchison, Whitney Dyess, William "Chip" Blanton, John Ward

New Teacher Award



Emily Soles, Dale County

*Visit alabamaffa.org for more information on these recognition opportunities.



More than 800 Alabama FFA members attended the 91st National Convention in Indianapolis, Ind.

Agriscience Education is one unit in the Career and Technical Education Section of the Alabama Department of Education.

Dr. Eric G. Mackey

State Superintendent of Education

Mr. Tommy Glasscock

Assistant State Superintendent of Career and Technical Education and Workforce Development

Agriscience Education - Montgomery Office

Education Administrator/State FFA Advisor—Jacob Davis

Education Specialist—Michael Hutto

Administrative Assistant—Tolina Davis

The Alabama State Board of Education and the Alabama State Department of Education do not discriminate on the basis of race, color, disability, sex, religion, national origin, or age in their programs, activities, or employment and provide equal access to the Boy Scouts and other designated youth groups. The following person is responsible for handling inquiries regarding the non-discrimination policies: Title IX Coordinator, Alabama State Department of Education, P.O. Box 302101, Montgomery, AL 36130-2101, telephone (334) 242-8165.



Agriscience Education- Auburn Field Office

FFA Executive Secretary—Andy Chamness

Graphic Arts Technician—Kenny Boyd



Alabama FFA Foundation Board Members

Paul Pinyan (President) - AL Farmers Federation

Jim Cravey (Vice President) - Past State FFA Officer

Doug Thiessen (Secretary/Treasurer) - Alabama Ag Credit

Andrew Brock - AAAE Past President (Marshall Tech HS)

Andy Chamness - Alabama FFA Executive Secretary

Brad Williams - Wayne Farms

Chris Alexander - Cargill

Chris Isaacson - AL Forestry Association

Doug Rigney - Board Member Emeritus

Dr. Billy Powell - Alabama Cattlemen's Association -retired

H. N. Lewis - Board Member Emeritus

Jacob Davis - State FFA Advisor

Jason Davis - Alabama Power

Jerry A. Newby - Newby Farms

Josh Johnson - WSFA Channel 12 Montgomery

Keith McCurdy - First South Farm Credit

Matt Ball - AAAE President (Florence HS)

Matt Ball - AAAE President Elect (Florence HS)

Mike Underwood - TriGreen Equipment

Reed Rogers - Golden Peanut Company

Samantha Carpenter - Alabama Farmers Cooperative

Sarah P. Murchison - AL Team AgEd

Seth Hammett - PowerSouth Energy Cooperative

Summer Williams - President-AL FFA Association

Alabama FFA Association

P. O. Box 302101
Montgomery, AL 36130-2101

Phone: 334-242-9114
Fax: 334-242-0234

Visit us online at www.alabamaffa.org!